



How to install an iDaq Component

Tutorial

May 2014

Rev 01

Worldwide technical support and product information:

www.toolsforsmartminds.com

TOOLS for SMART MINDS Corporate headquarter

Via Padania, 16 Castel Mella 25030 Brescia (Italy)

Copyright © 2014 TOOLS for SMART MINDS. All rights reserved.

SUMMARY

Introduction	5
Step-by-step installation guide	5
Useful links.....	7

INTRODUCTION

iDaq supports installation of additional components to extend capabilities and features of iDaq itself. With additional components, new types of acquisition devices, new signals processing features, and other kinds of functionalities can be added to iDaq.

This tutorial shows how to install or upgrade an iDaq component.

STEP-BY-STEP INSTALLATION GUIDE

To install a new component, follow these steps:

DOWNLOAD

iDaq component are distributed as zip files. You can download the last release of any iDaq component from the following link:

<http://www.idaq-datalogger.com/addons.php>

INSTALLATION

First of all, to install an iDaq component, from the iDaq main window, click on **Configuration ▶ Option ▶ Component**. The *component option window* will appear. The following figure shows this procedure.

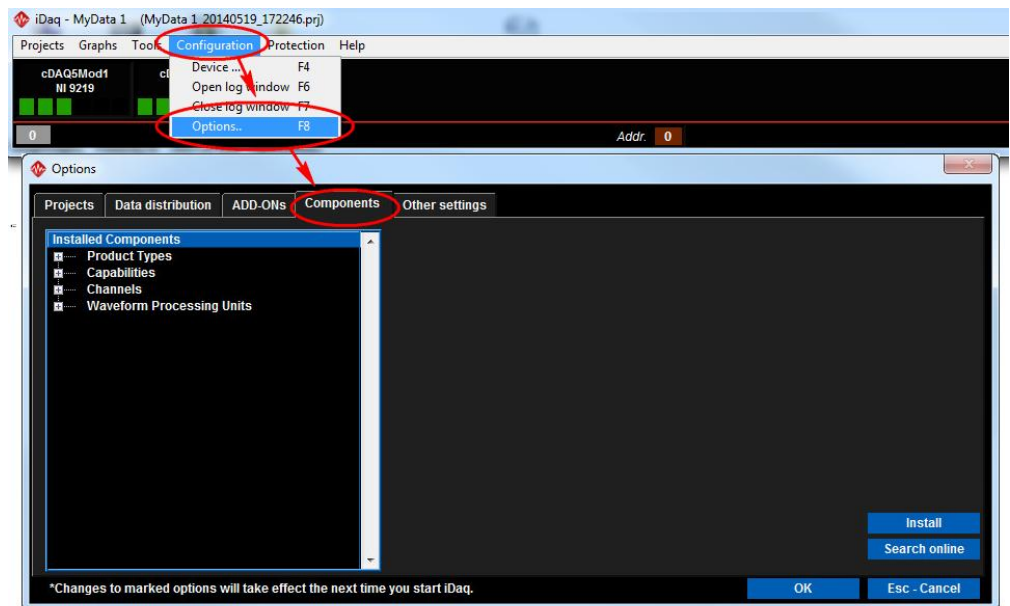


FIGURE 1 - HOW TO ACCESS TO THE COMPONENT OPTION WINDOW

The *component option window* shows the list of installed component. As reported in the following figure, to install a new iDaq component, press **Install button**, browse your files in **File Explorer** and select the ZIP component file (for example **XNET-CAN.zip**). Notice that ZIP file must not be extracted.

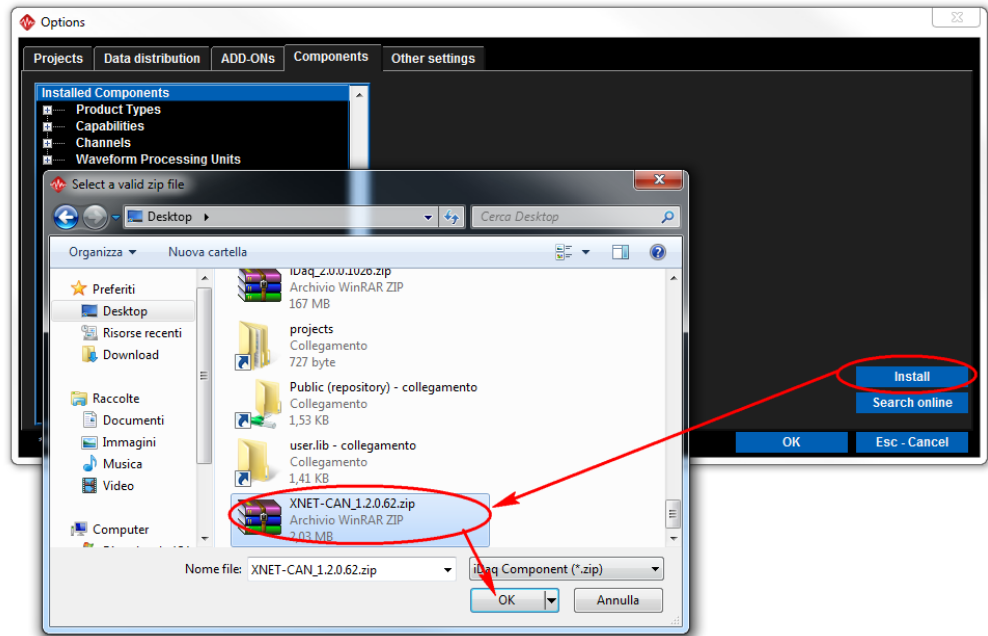


FIGURE 2 - INSTALLING A NEW COMPONENT

Once the ZIP component file is selected, iDaq will automatically install it. As shown in the following figure, if the installation process has been successfully completed, new item will be added in the list of installed components. If you are upgrading an already-installed component, release version of the component will be updated in the component list. If the installation process has not been successfully completed, an error will appear.

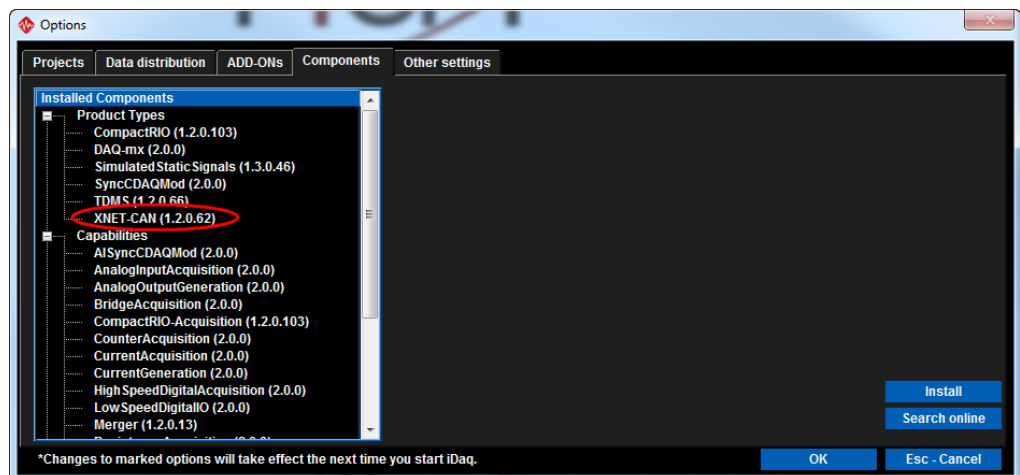


FIGURE 3 - INSTALLING XNET-CAN COMPONENT FOR IDAQ

RESTART IDAQ

Once installation is completed, restart iDaq and then you can start to use your new component.

USEFUL LINKS

iDaq product page: <http://www.idaq-datalogger.com/idaq.php>

iDaq ADD-ON Store <http://www.idaq-datalogger.com/addons.php>

Support: <http://www.idaq-datalogger.com/support.php>